



PUIPUIGA I LUGA OLE INTANETI | ONLINE SAFETY

Lisi Fa'aupuga Glossary



SPONSORED BY

C H ● R U S

netsafe

Lisi o Mataupu | Contents

Faiga o La'asaga (Algorithm).....	4
Polokalama Fa'aoga (App)	4
O se fa'apipi'i i le imeli (Attachment).....	4
Fa'aituau Paleni i le Atamai Fa'akomepiuta (Bias in AI).....	5
Poloka (Blocking)	5
Ropoti Talanoa (Chatbot)	5
Tala'aga o upega tafailagi na su'esu'eina (Browsing History).....	6
Fa'amaumauga fa'apitoa o le Upega (Cookie).....	6
Sauāga i luga o le initaneti (Cyber or Online bullying)	7
Tulaga fa'amaumau fa'ako mepiuta (Digital Footprint).....	7
Fa'amaumauga fa'akomepiuta e sii mai (Download).....	8
Fa'amatalaga fa'atauvala fa'akomepiuta (Deepfake).....	8
Fa'alilolilo o fa'amatalaga (Encryption).....	9
Faletupe fa'akomepiuta (E-wallet or digital wallet)	9
Taufa'asese (Fraud).....	9
Fa'aseseina le atamai fa'akomepiuta (Hallucinations - AI errors)	10
Feso'otaiga HTTPS malupuipuiga (HTTPS secure connections)	10
Gaoioiga fa'ailogaina o se isi tagata (Identity Theft).....	10
Upega tafailagi po'o le su'esu'ega i luga o le initaneti (Internet or web browser)	11
Fa'afoliga o se isi tagata (Impersonation).....	11
Fa'atau i luga o le initaneti (Online shopping)	11
Fa'amaoniga i la'asaga e tele (Multi-step verification)	12
Polokalame fa'aleagaina (Malware).....	12
Upu Fa'alilolilo (Password).....	13
Tau fa'asese e su'e ai fa'amatalaga patino (Phishing).....	13

Fa’avae (Platform).....	13
Fa’amatalaga patino (Personal Information)	14
Wi-Fi Lautele (Public Wi-Fi).....	15
Taufa’ase (Scam)	15
Fa’asalalauga lautele i luga o le Initaneti (Social Media).....	16
Imeli Pepelo (Spam)	16
So’otaga masalomia (Suspicious Links)	17
Fa’amaoniga i ni la’asaga se lua (Two-Factor Authentication).....	17
Vairusi (Virus)	17
Upega Tafa’ilagi Tumaoti (VPN-Virtul Private Network).....	18
Su’esu’ega i le initaneti (Web or Internet browser)	18

Netsafe would like to thank and acknowledge the wonderful contribution of the following Chorus staff, that donated their time to translate this booklet:

Merita Tagaloa, Areen Milovale, Sina Luamanu, Tiresa Leota-Seiuli, Latta Taulapapa, Krystal Nati

Ia tumau ile faafouga o faaupuga faakomepiuta e ala I le lolomi upu a Netsafe. Ole malamalama lelei I nei faaupuga e fesoasoani tele ile puipuiga o lou saogalemu I luga o le upega tafailagi.

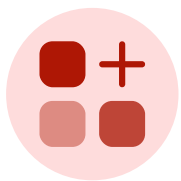
Stay up-to-date with digital terms using Netsafe's glossary. Having an understanding of these terms means you can stay safer online.



Faiga o La'asaga (Algorithm)

O se seti o faatonuga e mulimuli i ai le AI e fai ai faai'uga e pei o se fua i totonu o se tusi kuka. O algorithmimi e filifilia mea e aliali mai i lau feed i luga o upega tafailagi po o fa'asalalauga e te va'ai i ai. O le tele o mea e iloa e uiga ia te oe, o le tele fo'i o le fetuunaiga o mea e te va'ai i ai i luga o le initaneti.

A set of instructions AI follows to make decisions—like a recipe in a cookbook. Algorithms decide what shows up in your social media feed or which ads you see. The more it knows about you, the more it tailors what you see online.



Polokalama Fa'aoga (App)

O se ituaiga o polokalama i luga o se masini faakomepiuta. Siaki au faatagaga mo apps i lau masini e faaitiitia ai faamatalaga patino e aoina ma faasoa atu e uiga ia te oe.

A type of software on an digital device. Check your app permissions on your device to limit the personal information collected and shared about you.



O se fa'apipi'i i le imeli (Attachment)

O se faila komepiuta, pepa, po'o se ata e auina atu fa'atasi ma se fe'au. A'o le'i tatalaina se fa'apipi'i i le imeli, mafaufau pe o e fa'atalitali i lenei faila ma pe o le tagata na auina mai o se tasi e te iloa ma fa'atuatuaina.

An email attachment is a computer file, document or picture sent with a message. Before opening an email attachment, think about whether you are expecting this file and if the sender is someone you know and trust.



Fa'aituau Paleni i le Atamai Fa'akomepiuta (Bias in AI)

O fa'ai'uga e le tutusa pe le tonu e faia e le AI. E mafai ona tupu lenei mea pe a le tutusa pe le paleni fa'amatalaga na a'oa'oina ai le AI. Ia fai ma le faautauta pe a e fa'aogaina meafaigaluega AI mo fautuaga—e mafai ona iai ni manatu fa'apito natia po'o le fa'aitu i tagata i auala e le o fa'amoemoeina.

Unfair results or decisions made by AI. This can happen if the information the AI learned from wasn't fair or balanced. Be cautious when using AI tools for advice, they may reflect hidden preferences or treat people differently without meaning to.



Poloka (Blocking)

O le poloka i luga o le initaneti o lona uiga o le fa'aogaina o tekinolosi po'o fa'atulagaga e taofia ai nisi tagata po'o uepisaite mai le mafai ona o'o atu ia te oe po'o le maua o au fa'amatalaga i luga o le initaneti. E pei o le fa'atūina o se pa puipui fa'akomepiuta e taofia ai fegalegaleaiga po'o anotusi e le mana'omia i luga o le initaneti.

Blocking online means using technology or settings to prevent certain people or websites from reaching you or accessing your information on the internet. It's like setting up a virtual barrier to keep unwanted online interactions or content away.



Ropoti Talanoa (Chatbot)

O se polokalama komepiuta e talanoa ma oe—e pei o se fesoasoani fa'akomepiuta. E mafai ona e va'ai i ai i luga o uepisaite e fai ma fesoasoani mo tagata fa'atau, e ofoina atu fesoasoani po'o tali i fesili. Manatua ia aua ne'i fa'asoa atu ni fa'amatalaga patino e maaleale, upu fa'aofi po'o fa'amatalaga tau tupe.

A computer program that chats with you—like a virtual assistant. You may see them on websites as customer support, offering help or answering questions. Remember never to share sensitive personal information, passwords or financial logins.



Tala'aga o upega tafailagi na su'esu'eina (Browsing History)

O le tala'aga o upega tafailagi o se fa'amaumauga o 'upega tafa'ilagi ma itulau na e asiasi i ai a'o fa'aogaina le initaneti—e pei o se ala fa'akomepiuta o au gaioiga i luga o le initaneti. E mafai ona aogā mo le toe asiasi atu i 'upega tafa'ilagi na e matamata muamua ai, po'o le siakiina o le fa'aogaina o le initaneti.

Ia fa'amama lou tala'aga o su'esu'ega i taimi uma mai le lisi o le puipuiga ma le le fa'alaua'iteleina i lau su'esu'ega (browser).

Browsing history is a record of the websites and web pages you've visited while using the internet, like a digital trail of your online activity. It can be helpful for revisiting websites you've previously viewed or tracking your internet usage.

Clear your browsing history regularly from the privacy and security menu of your browser.



Fa'amaumauga fa'apitoa o le Upega (Cookie)

O cookies o ni vaega laiti o fa'amaumauga e teu e 'upega tafa'ilagi i lau komepiuta pe a e asiasi atu i ai. E fesoasoani i 'upega tafa'ilagi e manatua ai ou filifiliga ma fa'amatalaga fa'aulu, ma fa'afaigofie ai lou fa'aogaina o le initaneti. Peita'i, e mafai fo'i ona fa'aogaina mo le su'esu'eina o au gaioiga i luga o le initaneti.

Cookies are small pieces of data that websites save on your computer when you visit them. They help websites remember your preferences and login information, making your online experience more convenient, but they can also be used for tracking your online behaviour.



Sauāga i luga o le initaneti (Cyber or Online bullying)

O le faia fa'apitoa ma faifai pea o ni gaioiga e fa'aoo ai le tiga i se isi tagata i luga o le initaneti, e ala i le telefoni feavea'i po'o se isi masini fa'akomepiuta. Ia lipotia sauāga i le 'upega tafa'ilagi o lo'o talimalo ai i na fa'amatalaga, ma ia lipotia fo'i i le Netsafe. Fa'aoga au fa'atulagaga o le puipuiga i luga o le 'upega tafa'ilagi e poloka ai tagata sauā e puipuia ai oe.

Someone deliberately and repeatedly doing something that causes harm to another person online, with a mobile phone or other electronic device. Report bullying to the platform hosting the comments and to Netsafe. Use your platform security settings to block abusive individuals to protect yourself.



Tulaga fa'amaumau fa'akomepiuta (Digital footprint)

O lenei fa'amatalaga e fa'amatalaina ai fa'ailoga o au fa'amatalaga patino ma au gaioiga a'o e fa'aogaina le initaneti. Ina ia malamalama i lau footprint, su'esu'e lou igoa i luga o le initaneti ma va'ai i mea o lo'o aliali mai.

O le fa'asoa atu o mea i luga o le initaneti e le mafai ona e pulea atoatoa ai po'o ai e mafai ona va'ai i ai, o lea ia mafaufau lelei i le au maimoa a'o le'i fa'asoa atu.

This describes the traces of your personal information and activities as you use the internet. To understand your footprint, search your name online and see what's visible. Sharing content online means you can't always control who sees it, so think about your audience before sharing.



Fa'amaumauga fa'akomepiuta e sii mai (Download)

O le download o le fa'aliliuina o se kopi o se faila fa'akomepiuta (pei o se pepa Word, PDF, po'o se vitio) i lau masini ua e filifilia, ma e masani ona ta'ua o le 'sii mai'. A'o le'i sii mai ma tatalaina se faila, fesili ifo ia te oe pe e te fa'atuatuaaina le puna mai ai, ma pe e te iloa le mea o lo'o i totonu o le faila.

E aogā fo'i le siakiina o le ituaiga faila e va'ai ai pe fetau'i ma le mea o lo'o e manatu o lo'o i totonu—fa'ata'ita'iga, afai e te manatu o se pepa fa'amatalaga, e tataua ona fa'ai'u le igoa o le faila i le .pdf po'o le .doc, ma isi.

Downloading transfers a copy of a digital file (such as a word document, pdf, or video) to your chosen device and is sometimes referred to as a 'download'. Before downloading and opening a file, ask yourself if you trust the source, and if you know what's in the file. It's worth checking the file type to see if it matches what you think is in the file e.g. if you think it's an information document, the name of the file should end with .pdf or .doc, etc.



Fa'amatalaga fa'atauvala fa'akomepiuta (Deepfake)

O ata, vitio, po'o leo pepelo e faia e le AI e foliga moni pe fa'alogi moni. E mafai ona fa'aogaina e se tasi le deepfake e fa'afiafiaina ai se tagata moni ma fa'asalalau fa'amatalaga sese po'o fai se taufaasese. Ia fai ma le faautauta i vitio e fa'ate'ia ai po'o e ese le natura i luga o le initaneti, e tusa lava pe foliga mai e moni.

Fake images, videos or voices made by AI that look or sound real. Someone might use a deepfake to impersonate a real person and spread false information or conduct a scam. Be cautious with shocking or strange videos online, even if they seem real.



Fa'alilolilo o fa'amatalaga (Encryption)

O se auala e suia ai au fa'amatalaga i se faiga e le mafai ona faitauina e isi, se'i vagana ua i ai le ki sa'o. E fesoasoani le encryption i le puipuia o au fa'amaumauga pe a fai fa'atau po'o fai tupe i luga o le initaneti.

A way to scramble your information so it can't be read by others unless they have the right key. Encryption helps protect your data when shopping or banking online.



Faletupe fa'akomepiuta (E-wallet or digital wallet)

O se app po'o se fa'avae mo fefa'ataua'iga tau tupe e teu ai fa'amatalaga totogi ma upu fa'aofi (fa'ata'ita'iga: Google Pay, PayPal, Afterpay). Ia siaki iloiloga (reviews) ma fa'aoga na'o auaunaga e ta'uta'ua ma fa'atuatuaina mo se fa'atau saogalemu.

A financial transaction app or platform that stores payment information and passwords (i.e. Google Pay, Paypal, Afterpay). Check reviews and only use reputable services for safer purchases.



Taufaasese (Fraud)

O se faiga sese po'o se taupulepulega fa'aletulafono e fa'aimaimau ai se isi mo le manuia tau tupe po'o le lava o fa'amatalaga patino. Ia nofouta, e le o tala uma o lo'o e va'ai i ai i luga o le initaneti e moni. E ui ina to'atele tagata e fa'amaoni, e iai fo'i nisi i luga o le initaneti e fa'aaoga tala pepelo e taumafai ai e fa'asese oe ina ia e fa'asoa atu tupe po'o fa'amatalaga patino e mafai ona latou maua ai se manuia.

Wrongful or criminal deception intended to result in financial or personal gain. Be aware that not every story you see online is necessarily true. While most people are genuine, there are some people online who will tell false stories in order to manipulate you to get you to share money or personal information they can profit from.



Fa'aseseina le atamai fa'akomepiuta (Hallucinations - AI errors)

I nisi taimi e faia ai e le AI ni mea sese—pei o le faia o fa'amatalaga e le moni po'o le tu'uina atu o fa'amatalaga sese. Aua le fa'alagolago atoatoa i tali a le AI e aunoa ma le toe siakiina, aemaise lava pe a o'o i mataupu tāua e pei o le soifua maloloina po'o tupe.

Sometimes AI makes mistakes, like making up facts or giving information that's not true. Don't rely on AI answers without double-checking, especially when it comes to important topics like health or money.



Feso'otaiga HTTPS malupuipuiga (HTTPS secure connections)

Va'ai mo le fa'ailoga loka ma le “https://” i le pa o le tuatusi i lau su'esu'ega (browser). O lenei mea e fa'aalia ai o lo'o fa'aogaina e le 'upega tafa'ilagi se feso'ota'iga saogalemu e puipuia ai au fa'amatalaga, e tāua tele pe a e tu'uina atu upu fa'aofi po'o fa'amatalaga totogi.

Look for the lock symbol and “https://” in your browser's address bar. This shows the website is using a secure connection to protect your data, especially important when entering passwords or payment details.



Gaoioiga fa'ailogaina o se isi tagata (Identity theft)

O le fa'aogaina e aunoa ma le fa'atagaga o fa'amatalaga patino a se isi tagata, e masani lava mo le manuia tau tupe. Aua le fa'asoa atu au fa'amatalaga patino i luga o le initaneti—e aofia ai fo'i fa'amatalaga faigofie e pei o lou aso fanau ma lou tuatusi, aua e mafai ona fa'aogaina e fa'afiafiaina ai oe ma fai ai ni taufaasese.

The unauthorised use of someone else's personal information, usually for financial gain. Avoid sharing your personal information online – even basic information like your birthday and address can be used to impersonate you and commit fraud.



Upega tafailagi po'o le su'esu'ega i luga o le initaneti (Internet or web browser)

O se polokalama e fa'aaogaina e su'esu'e ma matamata ai i fa'amatalaga ma 'upega tafa'ilagi i luga o le initaneti. Va'ai i au fa'atulagaga o le su'esu'ega (browser settings) mo ni filifiliga e mafai ona fa'ateleina ai le saogalemu o lau su'esu'ega i luga o le initaneti.

Software that's used to access and view information and websites on the internet. Look at your browser settings for options to make your web browsing safer.



Fa'afoliga o se isi tagata (Impersonation)

O le fa'anaunau e pei o se isi tagata i luga o le initaneti, e masani ona faia ina ia maua le fa'atuatua ma fa'asese ai isi tagata e fa'asoa atu fa'amatalaga patino po'o tupe. Ia nofouta, e le o tagata uma o lo'o e feiloa'i i luga o le initaneti o tagata moni e pei ona latou fai mai ai.

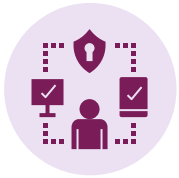
Pretending to be someone else online, often done to gain trust and manipulate other people to share personal information and money. Be aware not everyone you meet online is necessarily who they say they are.



Fa'atau i luga o le initaneti (Online shopping)

O le fa'atau po'o le faia o fefa'ataua'iga i luga o le initaneti. Fa'aoga 'upega tafa'ilagi ma tagata fa'atau e fa'atuatua ma e lelei iloilogia (reviews), ma tu'uina atu fa'amatalaga totogi na'o luga o 'upega tafa'ilagi saogalemu. Va'ai mo le "https://" ma le fa'ailoga loka i le pa o le tuatusi mo se fefa'ataua'iga saogalemu i luga o le initaneti.

Purchasing or transacting online. Use trusted sites and sellers with good reviews, and only enter payment details into secure websites. Look for "https://" and a padlock icon in the address bar for safer online transactions.



Fa'amaoniga i la'asaga e tele (Multi-step verification)

O se la'asaga fa'aopoopo mo le saogalemu e tatau ona e pasia a'o le'i mafai ona ulufale i lau teugatupe. E fa'apea, i tua atu o le upu fa'aofi, e tatau ona e tu'uina atu se isi fa'amatalaga lona lua. E mafai ona avea ma PIN (numera fa'ailoilo patino), tamatamai lima, po'o se numera avanoa mo se taimi puupuu mai se masini fa'atuatuaina, ma isi. Ia fa'atulaga le two-factor authentication mo au teugatupe ina ia fesoasoani e puipuia ai.

This is an extra security step to pass before you can login to your account. It means in addition to a password you have to provide a second piece of information. This may be a PIN (personal identification number), fingerprint or temporary access code from a trusted device, etc. Set up two-factor authentication for your accounts to help keep them secure.



Polokalame fa'aleagaina (Malware)

O se polokalama fa'akomepiuta e afaina ai le masini (pei o siana komepiuta) e mafai ona fa'aleagaina, fa'alavelave, pulea le masini, po'o le gaoi o fa'amatalaga patino. Ina ia puipuia lau masini, aua le tatalaina ni so'otaga po'o imeli e masalomia, sii mai na'o apps po'o mea mai punaoa fa'atuatuaina, fa'aoga se polokalama anti-virus, ma fa'afouina masani au polokalama ma apps ina ia tumau le saogalemu o lau masini.

Harmful software (e.g computer virus) that can damage, disrupt and take control of a device or steal personal information. To keep your device safer, don't open suspicious links or emails, only download apps or content from trusted sources, use an anti-virus programme and regularly update software and apps to keep your device safer.



Upu Fa'alilolilo (Password)

O se numera lilo po'o se fuaiupu e puipuia ai au teugatupe. Ia fa'atulaga ni upu fa'aofi malosi ma tulaga ese, e aofia ai mataitusi tetele, numera, ma fa'ailoga fa'apitoa mo se puipuiga sili atu.

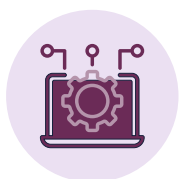
Secret code or phrase to protect accounts. Set strong, unique passwords or passphrases with capital letters, numbers and symbols for better security.



Tau fa'asese e su'e ai fa'amatalaga patino (Phishing)

O imeli, fe'au, po'o 'upega tafa'ilagi taufaasese e mamanuina ina ia gaoi ai fa'amatalaga patino po'o tupe mai tagata. Ina ia saogalemu mai i nei taumafaiga phishing, tatalaina na'o imeli po'o fe'au mai tagata e te iloa ma fa'atuatuaina, ma aua le kiliki i so'otaga i totonu o fe'au. Afai e te mana'o e asiasi i se 'upega tafa'ilagi, su'esu'e i ai e ala i se masini su'esu'e e pei o Google po'o Bing.

Deceptive emails, messages, or websites designed to steal personal information or money from victims. To stay safer from phishing attempts, only open emails or messages from people you know and trust, and don't click links in messages. If you want to visit a website – look for it by using a search engine such as Google or Bing.



Fa'avae (Platform)

O se fa'avae i luga o le initaneti o se si'osi'omaga fa'akomepiuta e feso'ota'i ai tagata, talanoa, a'oa'o, fa'atau, po'o ta'alo. E mafai ona avea ma 'upega tafa'ilagi po'o se app e tu'uina atu ai avanoa i tagata e fa'aogaina ni auaunaga po'o ni galuega fa'apitoa (fa'ata'ita'iga: fa'avae o upega tafailagi, fa'atau i luga o le initaneti, fa'avae vitio).

An online platform is a digital environment to connect people, communicate, learn, shop, or play. It can be a website or app that provides people with access to services or functions (i.e. social media platforms, e-commerce platforms, video platforms).



Fa'amatalaga patino (Personal information)

O fa'amatalaga e uiga ia te oe e mafai ona fa'aogaina e ulufale ai i au teugatupe, fai ai se fa'ailoga pepelo i luga o le initaneti, po'o le fa'afiafiaina o oe.

E aofia ai:

- Fa'amatalaga ulufale ma upu fa'aofi mo so'o se teugatupe i luga o le initaneti e aofia ai faletupe, imeli, upega tafailagi, ma 'upega fefa'ataua'iga
- Numera o teugatupe faletupe ma fa'amatalaga o kata fai aitalafu
- Tuatusi
- Numera telefoni
- Aso fanau
- Fa'amatalaga patino e feso'ota'i ma fesili puipuiga i au teugatupe i luga o le initaneti
- Laisene ave ta'avale
- Fa'amatalaga o le tusifolau

Puipui au fa'amatalaga patino ma fa'aitiitia le fa'asoa atu i luga o le initaneti mo se puipuiga fa'aopoopo i le taufaasese.

Information about you that can be used to access your accounts, build a fake online presence or impersonate you including:

- login details and passwords to any online account including banking, email, social media and trading sites
- bank account and credit card details
- address
- phone number
- birthdate
- personal information linked to the security questions on your online accounts
- driver's license
- passport details.

Safeguard your personal information and limit what's shared online for added protection against fraud.



Wi-Fi lautele (Public Wi-Fi)

O nofoaga faitele e mafai ona ofoina atu le Wi-Fi fua. O le feso'ota'i atu i nei upega tafailagi fua e mafai ona lamatia, ona e ono le lelei le puipuiga o le upega, ma e mafai ai ona pu'eina au fa'amatalaga i luga o le initaneti. Aua le fa'asoa atu fa'amatalaga maaleale a'o fa'aogaina Wi-Fi lautele, po'o fa'aoga se VPN e puipuia ai au fa'amaumauga a'o fa'aogaina nei upega tafailagi.

Public places may offer free wi-fi. Connecting to free networks can be risky as the network may not have security set up properly, which leaves your internet data vulnerable to being intercepted. Avoid sharing sensitive info while using public Wi-Fi hotspots, or use a VPN to secure your data while using these networks.



Taufaa'sese (Scam)

O le taufaasese o se tala pepelo e fa'aaogaina e fa'asesē ai tagata ina ia latou foda'i atu tupe po'o fa'amatalaga patino. Fa'aoga le SCAMS e iloa ai fa'ailoga masani o se taufaasese ma fai ai se gaioiga: Fa'ate'ia ai oe, Taumafai e pulea lau gaioiga, Mana'o i au fa'amatalaga patino, Talosaga mo tupe, Taofi le feso'ota'iga pe a e masalomia. Ia fai ma le faautauta pe a e talanoa ma tagata i luga o le initaneti, ma aua le lafoina atu se tupe i se tagata e te le'i iloa po'o le feiloa'i i ai i le olaga moni. Afai e te va'ai i se fa'ailoga taufaasese po'o e le lagona le saogalemu i se tala, Taofi le feso'ota'iga, saili se fesoasoani mai lou whānau, ma fa'afeso'ota'i Netsafe mo la'asaga e sosoo ai.

A scam is a made-up story to trick people out of money or steal their personal information. Use SCAMS to spot the most common red flags of a scam and take action: Surprise, Control, Access to personal information, Money requests. Be cautious about who you communicate with online, and never send money to anyone you don't know or haven't met in person. If you see a red flag or don't feel comfortable with a story, Stop communicating, seek support from your whānau and contact Netsafe for next steps.



Fa'asalalauga lautele i luga o le Initaneti (Social media)

O ni tulaga i luga o le initaneti e mafai ai e tagata ona fai ni talaaga, fa'asoa atu ni mea, ma fegalegaleai ma isi. Fa'ata'ita'iga: Facebook, LinkedIn, Snapchat, YouTube. Ia fai ma le faautauta i le fa'asoa atu o fa'amatalaga patino ma 'aua le soona fa'asoa atu i luga o upega tafailagi fa'aagafesootai ina ia puipuia ai mai le gaoia o fa'asinomaga.

Online platforms where users can create profiles, share content, and interact with others. e.g. Facebook, LinkedIn, Snapchat, YouTube. Be cautious about sharing personal details and avoid oversharing on social networks to guard against identity theft.



Imeli Pepelo (Spam)

O feso'ota'iga faakomepiuta e le mana'omia, e le'i talosagaina, ma e lafo atu i le tele. E mafai ona e fa'aogaina ni fa'amama imeli (email filters) e taofia ai tagata lafo spam ma fai ni tulafono e lafo sa'o atu ai i le faila o lapisi (junk). Fa'ailoa atu uma spam i le Matagaluega o Fefa'ataua'iga i totonu o Niu Sila – fa'ailoa atu imeli i le complaint@spam.govt.nz; fa'ailoa atu fe'au tusitusia i le 7726 ma tali atu i le fe'au mai le DIA ma le numera telefoni na sau ai le fe'au spam.

Unwanted, unsolicited digital communication sent out in bulk. You can use email filters to block spam senders and create rules to send them directly to junk. Report all spam to the NZ Department of Internal Affairs – forward emails to complaint@spam.govt.nz; forward texts to 7726 and reply to the text response from the DIA with the phone number the spam message came from.



So'otaga masalomia (Suspicious Links)

A o e taofi le isumu i luga o so'oga i fe'au, imeli, po'o luga o le upega tafailagi, e mafai ona e iloa ai o le URL o le upega tafa'ilagi e aliali mai e le fetau ma le so'oga o lo'o fa'aalia. Fa'ata'ita'iga: e alu atu i le notsafe.org.nz nai lo le netsafe.org.nz. Aua le kiliki i so'oga masalomia.

When you hover with a cursor over links in messages, emails, or online, you may notice that the website URL that shows up doesn't match what the link says it should be. E.g. it goes to notsafe.org.nz instead of netsafe.org.nz. Don't click on suspicious links.



Fa'amaoniga i ni la'asaga e lua (Two-Factor Authentication)

(2FA, multi-step verification): Taga'i i le fa'amaoniga i la'asaga eseese (multi-step verification).

(2FA, multi-step verification): See multi-step verification.



Vairusi (Virus)

O se ituaiga o polokalame leaga (malware) e sosolo atu i isi faila po'o polokalame e ala i le pipii atu i ai, ma e mafai ona fa'aleagaina ai le komepiuta po'o gaoia ai fa'amatalaga patino. Ia fai ma le faautauta i faila o le komepiuta ma fa'apipi'i imeli (email attachments) o lo'o e sii mai ma tatala.

A type of malware that spreads by attaching itself to other files or programs and can cause damage or steal information. Be cautious about which computer files and email attachments you download and open.



Upega Tafa'ilagi Tumaoti (VPN-Virtual Private Network)

O le VPN o se feso'ota'iga fa'apitoa ma le saogalemu i luga o le initaneti. E mafai ona e siiina se VPN e fa'alilolilo ai fa'amatalaga o lo'o e lafo atu i luga o le Wi-Fi, ma fa'ateleina ai le saogalemu pe a e fa'aogaina feso'ota'iga Wi-Fi lautele e le puipuia. E masani ona aofia ai i polokalame puipuia fa'atekinolosi e pei o le Norton ma le AVG, o lo'o puipuia ai fo'i lau masini.

Virtual Private Network. Download a VPN to encrypt data you send over wifi to make it safer to use unsecured public wifi networks. These are often included in anti-virus and security software packages which protect your device, such as Norton and AVG.



Su'esu'ega i le initaneti (Web or Internet Browser)

O se polokalame e fa'aaogaina e ulufale atu ai ma matamata i fa'amatalaga ma upega tafa'ilagi i luga o le initaneti. Siaki i le vaega o fa'atulagaga (browser settings) mo ni filifiliga e mafai ona e ki ai e fa'ateleina ai le saogalemu o lau fa'aogaina o le initaneti.

Software that's used to access and view information and websites on the internet. Look at your browser settings for options you can turn on to make your web browsing safer.

Punaoa Fa'aopoopo

Saili le matou fa'asologa atoa o ta'iala loloto, pepa fa'amatalaga vave, ma gaoioiga a'oa'o fa'atekinolosi mo tagata matutua ma i latou o lo'o lagolagoina i latou. E silia ma le 20 punaoa e mafai ona e filifilia, e aofia ai mataupu e uiga i le saogalemu ma le puipuiga i luga o le initaneti e pei o:

- Puipuiga o masini ma talaaga
- Malamalama i taufaasese ma auala e tali atu ai
- Saogalemu i upega tafailagi fa'aagafesootai ma fa'atauina
- Fa'atekinolosi fou, avanoa mo tagata uma, ma fa'aupuga fa'atekinolosi

Asiasi i le: netsafe.org.nz/olderpeople

Afai e te le mautinoa i se tulaga, pe e te mana'omia se fautuaga fa'aopoopo, e mafai ona e su'e nisi fa'amatalaga i le upega tafailagi a Netsafe: netsafe.org.nz

SPONSORED BY

C H ● R U S

| **netsafe**

O Matou o lo'o i ai mo oe. Afai e te mana'omia se fesoasoani pe ua e a'afia i se fa'alavelave i luga o le initaneti, fa'afeso'ota'i Netsafe.



Call 0508 638 723



Visit netsafe.org.nz



report.netsafe.org.nz

SPONSORED BY

C H ● R U S

netsafe